



Photo courtesy of BSU

Greater Bemidji Area Joint Planning Board

September 2016

Bemidji Township

City of Bemidji

Northern Township

PO Box 1100
Bemidji, MN 56619

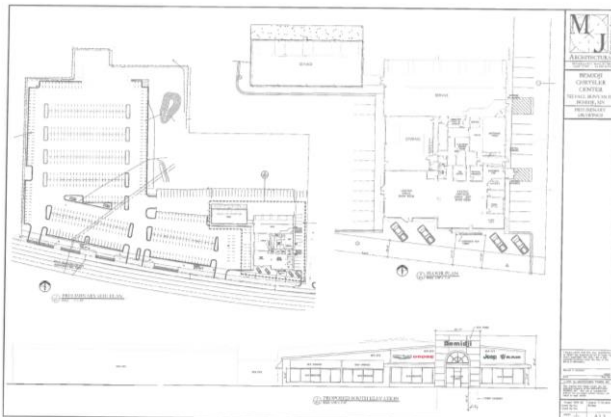
(218) 759-3579



What's going on?

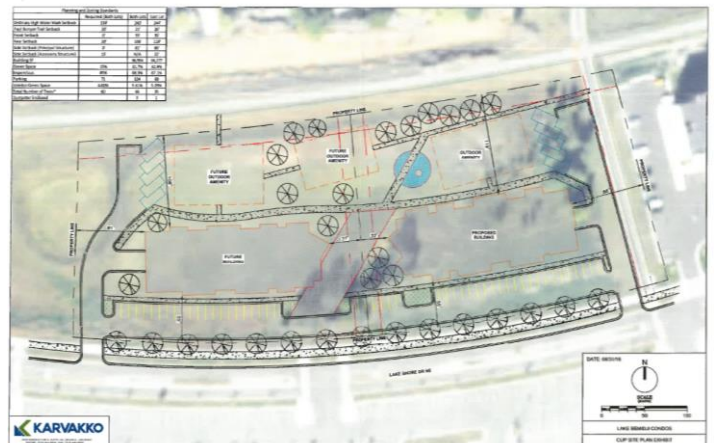
Planning Cases for August/September

City of Bemidji – V-16-80.00077.00: Bemidji Chrysler Center is requesting a Variance for a millennium Chrysler arch tower that will be installed within the front yard setback. The parcel is located at 755 Paul Bunyan Drive Northwest in the B2 General Commercial District.



Planning Cases for September/October

City of Bemidji: CUP-16-80.05985.00/80.05984.00– ICON Architectural Group is requesting a conditional use permit for the removal of more than 60% of the high quality significant trees located in the South Shore Development in the Lake Orientated Development Zone. The two parcels are located directly west of the Country Inn & Suites.



Development Projects

Pizza Hut
 Urgent Care Medical Clinic (Old Bowling Alley)
 Holiday Store Redevelopment
 Whiting Road Subdivision
 Airport Hangars/Snow storage building
 Cedar Pointe Multi Family
 Center City Housing Multi Family
 University Heights
 Candlewood Hotel
 McDonalds
 Kohls
 Toyota
 South Shore – Pace Project – Apartments
 South Shore Crossing– Icon Project – Condos

Site Analyst Report

August was the battle over trash enclosures, staff sent out six (6) violation letters for projects with incomplete trash enclosures. This issue appears to be one that is going to be an ongoing battle. Only one of the owners that was sent a violation letter is taking corrective actions to rectify the violation. Parking enforcement is also in full swing now and staff is fielding complaints as they come in and also out on the road looking for violations. Many letters have been sent out notifying owners of the violations on their property. Other violations related to outdoors storage, are also being caught during this heightened enforcement time with a few violation letters being sent out for these violations as well. Staff has also been working on the removal of a house that was supposed to happen when a new house was built, this has been an ongoing issue that we can final say action is taking place and the old house should be removed with in the month.

Site plan reviews have slowed over the last month with many of the big projects we have seen well under way or about to break ground. Staff has worked with several business in the last month on possible site changes and remodels which included Pizza Hut, Lazy Jacks and First Assembly of God. Staff has also worked on a few residential site plan reviews, and expects these to ramp up again as people try to get there construction done before winter.

Planning Report

Comprehensive Plan

A Steering Committee has been appointed to disseminate what was gathered previously and to guide the planning process moving forward. The Steering Committee is comprised of representatives from the JPB, JPC, city officials, business owners, residents and representatives from a variety of community interest and betterment groups to guide the Comprehensive Plan development and make recommendations to the JPC and JPB. The first Steering Committee kick-off meeting was held on Thursday, September 8th, 2016 and the following chapters were discussed:

- ➔ **Chapter 1: Introduction** provides an introduction to the Comprehensive Planning process and acknowledgements of those instrumental in its development.
- ➔ **Chapter 2: Vision Statement/Guiding Principles** identifies and summarizes the Greater Bemidji Areas goals, objectives and policies for the future and as the foundation for the development of the remainder of the Plan.
- ➔ **Chapter 3: Who we Are/Community Overview** provides a summary of the social, economic and physical features that are influencing land use and community development patterns at the time in which the Plan was developed.

JPB staff will submit chapters in segments of threes for preliminary approval by the JPC and the JPB. This will eliminate time at the completion of the plan and allow staff to make recommended changes earlier in the process. The next Steering Committee Meeting is tentatively scheduled for the week of September 26th or October 3rd.

Upcoming JPB/JPC Meetings

- JPB – September 14th
- JPC – September 22nd
- JPB – October 12th
- JPC – October 27th
- JPB – November 9th
- JPC – November 17th
- JPB – December 14th